

DAY 4 SUNDAY, 26 JANUARY 2025

# SHOWDAILY™

The Daily News of IMTEX 2025



Scaling new heights  
in manufacturing

Organiser



Indian Machine Tool  
Manufacturers' Association



International Machine Tool &  
Manufacturing Technology Exhibition

Concurrent Shows



International Exhibition of Cutting Tools, Tooling Systems,  
Machine Tool Accessories, Measuring & QC/CIM



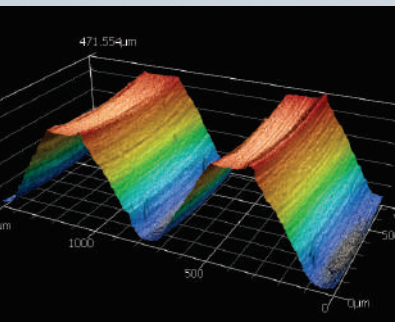
International Exhibition on  
Digital Manufacturing Technology

23 - 29 January 2025 · BIEC, Bengaluru

## We help you win – now and in the future.

Meet our machining experts at booth A110  
in hall 7 to explore Liquid Tool, a new dimension  
of Productivity.

er. Blaser



Our Liquid Tool. Your Success.



**We help you win  
– now and in the future.**







**Asia's Leading Fixture Builder**

Trusted By The World's Best Companies

For over 50 years Forms and Gears has been designing and manufacturing fixtures for the world's leading companies, in 10 countries across the globe.

Visit us at: Hall 7 | B-112



**RV Forms & Gears LLP**  
 MF 11, SIDCO Industrial Estate, Guindy,  
 Chennai - 600 032, Tamilnadu, India  
 Call +91 77570 53326 or email us on  
 marketing@rvformsandgears.com  
 www.rvformsandgears.com



**TURNING, MILLING, AND GRINDING CENTERS**

# Demonstrating Unified Strength

**AceMicromatic Group, a stalwart in the Indian machine tool industry, is set to make a significant impact at IMTEX 2025, marking its first major exhibition since the amalgamation of Ace Designers, Ace Manufacturing Systems (AMS), and Micromatic Machine Tools. This strategic integration has fortified the group's capabilities, fostering enhanced innovation, efficiency, and customer service.**



Source: Magic Wand Media

“casing our comprehensive range of solutions for skill development, a strategic requirement for the growth of every manufacturing industry,” he shares.

Harish expects IMTEX 2025 to be a significant growth driver by generating new business opportunities and strengthening the Group's brand presence.

During the last IMTEX 2023, the Group generated enquiries of over INR 400 crore, with confirmed orders of over INR 100 crore. “We are hoping to substantially increase the results of last year for both enquiry generation and order booking. Exports are a key focus area for us in the five-year business plan, and we are expecting to see a huge increase in our enquiry generation due to the influx of overseas visitors looking at economical alternatives to expensive machine tools from Europe and Asia,” he reveals.

Over the years, AceMicromatic Group (AMG) has continuously evolved by embracing technological advancements and focusing on customer-centric solutions. The Group has invested heavily in research and development to develop innovative products that cater to the changing demands of modern manufacturing. Its adoption of Industry 4.0 practices has enabled it to integrate smart technologies into its products, enhancing their capabilities and performance. Additionally, it has expanded its global footprint, establishing a strong presence in key markets worldwide. “Our commitment to quality and excellence has

enabled us to stay ahead of the curve and meet the dynamic demands of modern manufacturing,” shares Harish B, CEO, Micromatic Machine Tools Pvt Ltd, AceMicromatic Group.

### Strengthening the Group's Capabilities

The integration of Ace Designers, AMS, and Micromatic under the AceMicromatic Group has significantly strengthened AMG's capabilities by combining its expertise and resources.

“This amalgamation has led to enhanced innovation, efficiency, and customer service. By leveraging the strengths of each entity, we have been able to streamline

our operations, reduce costs, and improve our product offerings. Due to the amalgamation, several resources such as design, branding, HR, accounts, finance, vendors, and supply chain can be integrated,” reveals Harish.

### IMTEX Impact on AMG's Growth

At IMTEX 2025, AMG is showcasing over 40 innovative products which are not merely CNC machines but complete solutions. Several of these products are import substitutes while other solutions include low-cost automation, cell automation, and multi-tasking. “We are also show-

### New Machine Launches at IMTEX 2025

At IMTEX 2025, AceMicromatic Group is unveiling several new machines, including advanced CNC lathes, high-precision vertical and horizontal machining centers, plus automated production systems.

To be continued on 4 ▶



## AUTOMATED SOLUTIONS FOR METAL CUTTING



**MW80HGT**



Twin Spindle Twin Gantry Chucker

**MW120EX**



Twin Spindle CNC Chucker

**MT100/T3**



Ultimate Multi-Tasking Twin Spindle Machine

**MWR120**



All New Twin Spindle Turn-Mill Centre with Y Axis

VISIT US AT

HALL | 5

STALL | B105

Bangalore | Chennai  
Mumbai | New Delhi | Pune



Source: Magic Wand Media

» Our participation in IMTEX 2025 will help us reinforce our position as a leader in the industry by showcasing our commitment to innovation, quality, and customer satisfaction. We will also use this platform to forge strategic partnerships and explore new business opportunities.«

**Harish B**  
Director  
Ace Designers Ltd - Marketing & Service Division  
AceMicromatic Group

AMG has always been at the forefront of developing import substitute products and indigenously developed innovations. It is continuing the trend by showcasing new innovations such as skiving and worm milling on CNC lathe, VMC for machining of composites, high-speed DTC for the EMS segment, a circular saw machine with facing and centering, additive solutions, CNC simulators, tabletop CNC and VMC, and several more such innovations.

### On-site Activities at AceMicromatic Booth

The AMG's Booth at IMTEX 2025 features live demonstrations of its latest machines, interactive sessions with its technical experts and presentations on its innovative solutions. "We also have a dedicated area for customer consultations, where visitors can discuss their specific requirements and explore customized solutions. Additionally, there is a dedicated Finance Corner where our preferred financial partners offer special financial schemes for customers looking for machine funding. Visitors can also expect networking sessions and giveaways," shares Harish. Additionally, there is also an exclusive space for skill development solutions where the Group's CNC tabletop machines and a range of CNC simulators is on display. "We are also launching two technical books in Hindi on

CNC programming, which is one more up-skilling initiative from AceMicromatic Group. We are also showcasing our range of strategic service and ecosystem solutions," he reveals.

### Global Presence

AMG's most exported machine models include CNC lathes, machining centers, and grinding machines, shares Harish. These machines are highly sought-after in regions such as North America, Europe, and Southeast Asia. The Group is present and focused on geographies such as China, Southeast Asia including Thailand, Vietnam, and Indonesia, MENA and emerging markets of North Africa. In Europe, it is focused on Germany, Italy, Poland, and Spain. "We are also present in North America and Mexico. Our product range for export markets in the CNC lathe segment includes our largest selling series of Jobber series, Turn Mill centers large format CNC lathes and VTLs. In the VMC segment, the popular models are MCV 450, 1060, and 540V. The Twin Spindle Gemini series of VMCs, IoT solutions and CNC External and CNC Centreless grinders are also widely exported," he reveals. **SD**

**AceMicromatic Group**  
www.acemicromatic.net  
Hall & Stall: 5/B-109



## UNLOCK PRECISION IN ELECTRONICS MANUFACTURING WITH ANCA CNC MACHINES



Download a free whitepaper on the latest trends, opportunities, and strategies shaping India's thriving electronics sector



Visit us at IMTEX 2025  
Hall 4, Stand B110





# LMW

wishes you a

## HAPPY Republic Day

Experience the Value in our Machines & Solutions

### Hall - 5, Stall - A-108

**JU40**  
HIGH PRECISION 5 - Axis  
Vertical Machining Center



- Stroke: (X,Y,Z) - 400 mm x 550 mm x 550 mm
- Table Size - Ø 500 mm
- Max. work piece size - 500 x 400 mm
- High Spindle speed - 15000 rpm
- Spindle taper - BBT 40
- Faster Rapid Traverse Rate(X,Y & Z) - 48 m/min



FOLLOW US ON :



INDIA'S FINEST RANGE  
OF CNC MACHINES

TURNING    MILLING    TURNMILL



[www.lmwcnc.com](http://www.lmwcnc.com)



**Ministry of Heavy Industries, Govt. of India & Bureau of Indian Standards, Govt. of India  
"Machinery and Electrical Equipment Safety (Omnibus Technical Regulation) Order, 2024"**

Mandatory "OTR Order 2024" Registration by Every Indian & Overseas Manufacturer of metal-cutting machines, accessories, aggregates, attachments and components of machine tools

NO sale permitted in India, without "OTR Order 2024" registration, from September 2025

**MHI, BIS and IMTMA are Organising 'Awareness Session for Indian and Global Machine Tool Industry @ IMTEX 2025'**

1500 - 1730 hours | Monday, 27 January 2025  
'Jacaranda' Hall in "Conference Centre", BIEC  
(No Charges for Participation | MUST ATTEND)



**SEMINAR**

**ISMT 2025: Enthusiasm Remains High as Day Two Unfolds**

The second day of International Seminar on Machining Technologies 2025 commenced with a panel discussion on Shaping India's Manufacturing Ecosystems for Global Excellence.

The panelists included Jim Walsh, Vice President – Tooling, Tata Electronics; L Krishnan, Managing Director, Taegutec India; Seenivasan Balasubramanian, CEO, International Aerospace Manufacturing Pvt Ltd; Ravi Raghavan, Managing Director, BFW Ltd; Praveen VA, Vice President – Engineering, Toyotetsu India Auto Parts Pvt Ltd.

This was followed by a presentation from the Ministry of Micro, Small and Medium Enterprises that had Deepu Govind explain the usefulness of Open Network for Digital Commerce (ONDC). Designed to democratize digital commerce, ONDC is a step towards creating an inclusive, fair, and competitive digital commerce environment in India. Later two parallel concurrent sessions continued on themes Smart Sustainable Solutions and Emerging Technologies.

**SD**



**Rajamane & Hegde Services Pvt Ltd**



**2SP2 Motorspindles**



**2SP2 the new middle-class standard**

The new 2SP2 asynchronous milling spindle series is characterized by robustness and performance. Its compact dimensions meet the necessary requirements to keep the space requirement in the machine as low as possible. The option with or without external cooling jacket offers the machine builder flexibility in designing the connection of the spindle to the Z-slide.

Here, the new spindle series with an outer diameter of 170 mm already achieves a nominal torque of 45 Nm. For applications requiring more spindle torque, a variant with an outer diameter of 210 mm is available.

The spindle has been designed with a slim diameter and open cooling jacket but is also optionally available with a closed cooling jacket.

The robust bearing system ensures speeds of up to 20,000 rpm with lifetime grease lubrication. For speeds of up to 24,000 rpm, a version with air-oil lubricated bearings is also available. The specially developed asynchronous motor is equipped with loss-optimized profile rods to keep the rotor losses as low as possible. In this way, the spindle ensures low heat-up and reduced growth at the tool interface, even at maximum speeds.

**For more information, please ask for spindle catalogue.**

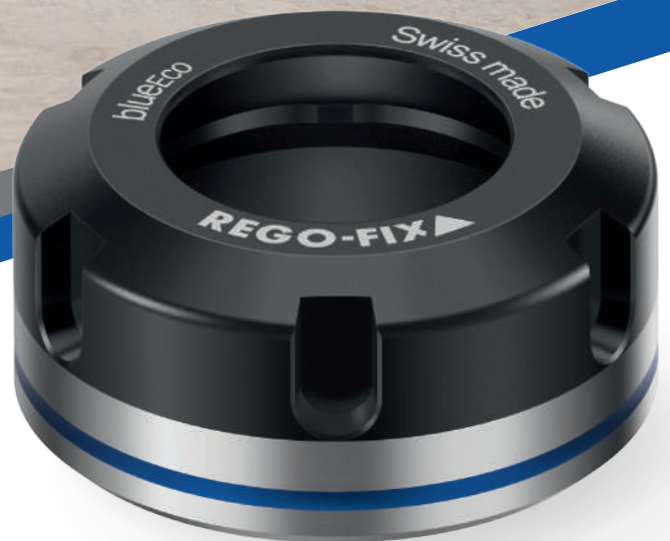
**India's only authorised service partner for Weiss spindles**



**blueEco**

**IMTEX<sup>®</sup> 2025**

**Booth #B108  
Hall 3A**



Precision ER Collet System  
from the inventor of the ER

[www.rego-fix.com](http://www.rego-fix.com)

**REGO-FIX** 



**HOME-GROWN INNOVATION**

**Twara Launches New Robotic Arm and Solutions at IMTEX 2025**



Source: Magic Wand Media

Yesterday, at IMTEX 2025, Twara Robotics—a startup founded by Kaushik Sampath Ph.D; Ashish Joglekar Ph.D, and Alok Singh Rawat—launched a robotic arm capable of handling fragile objects.

The startup was incubated at Artpark, a new tech hub for AI and robotics, at IISc (Indian Institute of Science), under the Ministry of Heavy Industries' program, CAMRAS (Center for Advanced Manufacturing for Robotics and Autonomous Systems). Previously, the company specialized in delivering joint actuators

and soft grippers for fragile products, which could be combined to form robotic arms and complete robotic systems. With this launch, Twara has introduced fully assembled robots designed to meet industrial needs and is now focusing on scaling up production.

The founders are seeking feedback from visitors at the event to further enhance their products. **SD**

**Twara Robotics**  
www.twararobotics.io  
Hall & Stall: 7/D-108

**DELEGATE SPEAK**

**“Found Our Solution at IMTEX 2025”**



Source: Magic Wand Media

“We are visiting IMTEX to explore suitable machines that could simplify our operations and tools to aid in the maintenance of our existing systems. We have come across some impressive turning machines, lathes, cleaning machines, and advanced controlling systems. Additionally, we were seeking alternative solutions for our heavy-weight conveyor systems. We have found a company offering solutions for small payload systems. We believe these can be modified to meet our needs, potentially reducing maintenance requirements significantly.”

**C Chinniah**  
Deputy Chief Mechanical Engineer – Planning  
Rail Wheel Factory, Yelahanka, Bangalore

**“IMTEX, an Opportunity to Explore Manufacturing Advancements”**



Source: Magic Wand Media

IMTEX is a world-class exhibition that features a comprehensive display of machine tools for enhancing manufacturing operations. Manufacturing technologies are evolving at a fast pace. I thank IMTMA for providing us the opportunity to explore these advancements. At IMTEX 2025, several companies are displaying their AI-driven machine tools, which I believe are highly beneficial for progressive companies. The exhibition is well-arranged. I extend my best wishes to the organizers for the success of the show.

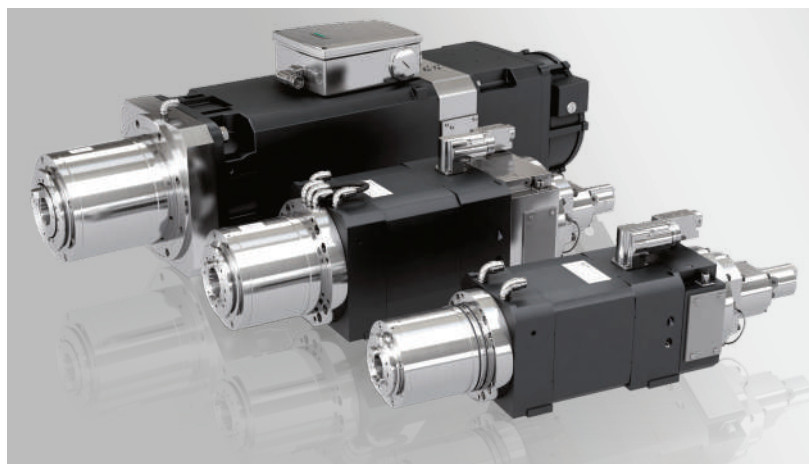
**KN Prasad**  
Managing Director  
Toyota Kirloskar Auto Parts Pvt Ltd



**Rajamane & Hegde Services Pvt Ltd**



**Hybridspindle**



**More than only an alternative for indirect spindle solutions**

The hybrid spindle is an impressive development - the combination of the master spindle motor and the spindle functionality results in a high-quality milling spindle.

The design includes all necessary spindle functionality, maximum speed up to 24,000 rpm and high accuracy because of direct driven technology. The Hybrid Spindle gives to machine builders the possibility to improve the performance of machines originally built with indirect spindle solution.

For more information, please ask for the spindle catalogue.

**India's only authorised service partner for Weiss spindles**



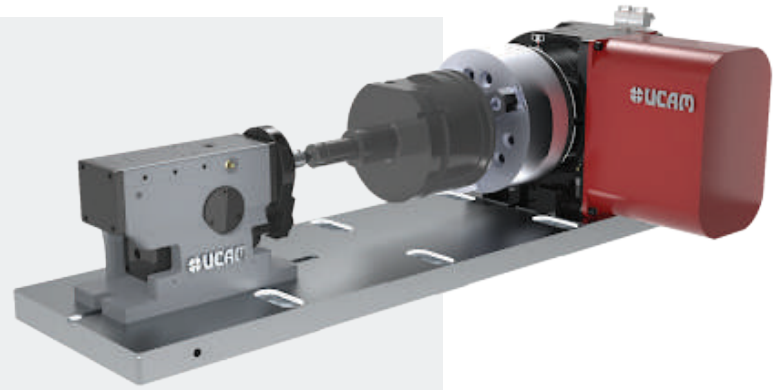
# Boosting Machining Productivity

Visit Us at

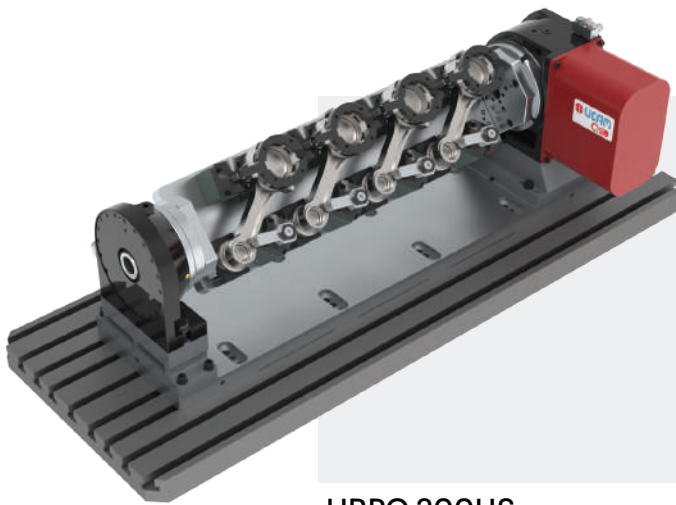
Stall No. **A102**, Hall No. **H1A**



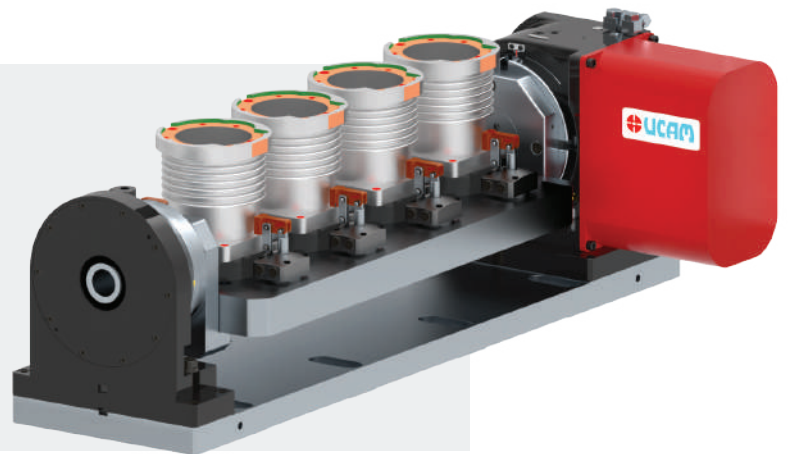
URQ 250HS



URQ 200HS



URPQ 200HS



URPQ 200HS



ULSR 200q



USSR 200q



Scan this code  
or Log on to  
[ucamind.com](http://ucamind.com)

**Contact**

080-40744712  
[info@ucamind.com](mailto:info@ucamind.com)  
[www.ucamind.com](http://www.ucamind.com)

**Head Office**

A-11/12, 1st Stage, 1st Cross,  
Peenya Industrial Area,  
Bangalore - 560058



**INTERNATIONAL PRESENCE - KOMMA**

# Showcasing Korean Manufacturing Excellence at IMTEX 2025

Jai Hun Park, President, Korea Machine Tool Manufacturers' Association (KOMMA), feels IMTEX 2025 & Tooltech 2025 will open a new chapter in the exchange and collaboration between the manufacturing industries of Korea and India. "We hope that the exhibition will be a great success, attracting many high-quality Indian buyers to visit the Korean Pavilion for discussions and paving the way for tangible business opportunities. In particular, we foresee active market entry by Korean companies in alignment with India's manufacturing development policies," he notes. A notable highlight is DN Solutions, a member company of KOMMA, investing in constructing a new plant and establishing an R&D center in Bengaluru. "Thus, IMTEX 2025 & Tooltech 2025 will serve as a meaningful platform for fostering global collaboration and innovation," he adds.

## Advancing Metal Cutting Technology

"Smart manufacturing technologies that prioritize energy efficiency and

sustainability, in addition to improving productivity, are expected to become the core trend. For instance, digital solutions such as predictive maintenance to minimize factory downtime or innovative technologies leveraging AI to enhance machining precision are emerging as game changers in manufacturing," he adds. These technological trends will also be a key focus at SIMTOS 2026, Korea's largest manufacturing technology exhibition, to be held from April 13-17, 2026.

## Role of Smart Manufacturing

Korea, already a leader in high-precision and high-productivity solutions, is pushing the boundaries further. "With increasing demands for digitalization, Korean companies are optimizing data-driven production processes and developing autonomous factory solutions," shares Park.

For instance, systems that analyze process data in real time to maximize productivity or unmanned auto-

mation lines enabled by collaborative robots are prime examples.

## Korean Participation at IMTEX 2025

The Korean Pavilion at IMTEX 2025, organized by KOMMA, features 11 companies under the pavilion and 8 individual participants, making a total of 19 companies occupying 148 booths over 1,762 sq mt. The Korean Pavilion showcases a wide range of products, from advanced machine tools such as turning centers and machining centers to high-precision automation components like linear motion guides and rotary tables, as well as high-strength tools like inserts and end mills. "The exhibition is an ideal platform for Korean companies to present tailored technologies and solutions designed for the Indian market, fostering practical business collaborations with Indian companies. We encourage you to visit the Kore-



Source: KOMMA

» IMTEX 2025 & Tooltech 2025 is an ideal platform for Korean companies to present tailored technologies and solutions designed for the Indian market, fostering practical business collaborations with Indian companies. We encourage you to visit the Korean Pavilion in Hall 2B to witness the outstanding technological capabilities firsthand.«

**Jai Hun Park**  
President  
Korea Machine Tool Manufacturers' Association (KOMMA)

an Pavilion in Hall 2B to witness the outstanding technological capabilities firsthand," he urges. **SD**

**Korea Machine Tool Manufacturers' Association (KOMMA)**  
www.simtos.org | Hall & Stall: H2B/A-127



# PMT MACHINES LIMITED

PUNE & HALOL





**CNC Turning Center 5000 ABC**



**CNC Gear Hobbing**



**CNC Vertical Turning**



**CNC Cylindrical Grinding**



**CNC Internal Grinding**



**Surface Grinding**



**Automat**

**YOU ARE INVITED TO VISIT THE EXHIBITION**  
HALL NO - 2A STALL NO - B110

**23-29 January, 2025 | BIEC - Bangalore**



www.pmtmachines.com



# Driven by Excellence, Powered by Experience, Trusted by Industry.



Meet STM at IMTEX 2025 - your gateway to next-generation manufacturing solutions. For 25+ years, STM has been transforming Indian manufacturing with world-class machine tools that combine advanced technology with unmatched reliability.

## 3600+

Machines Empowering  
Industries Across India

## 18+

Branches Ensuring  
Nationwide Reach

Excellence  
by Numbers

## 25+

Years of Precision  
Engineering Mastery

## 24/7

Dedicated  
Service Support

### Tomorrow's Technology Today

- ▶ IoT-enabled smart manufacturing solutions
- ▶ Advanced Taiwanese craftsmanship
- ▶ Proudly manufactured in India
- ▶ Comprehensive pan-India service network

Experience the STM Advantage at IMTEX 2025

**Hall: 1A | Stall No: B101**  
**23<sup>rd</sup> – 29<sup>th</sup> January 2025**

Join India's manufacturing leaders who have discovered true value in precision engineering.

**S&T MACHINERY (P) LTD.**

+91-422-2590810 +91 99725 00090 info@stmnc.com www.stmnc.com

DISCOVER THE MEANING OF VALUE



**S&T  
GROUP**  
SINCE 1996





**GRINDING MACHINES**

# MicroX ULTRA from ANCA

ANCA's revolutionary ULTRA technology combines nanometer control, servo-controlled algorithms, and mechanical stiffness upgrades to achieve unprecedented accuracy. The FX5 ULTRA and MicroX ULTRA, which are featured at the IMTEX, demonstrate ANCA's commitment to precision and excellence in

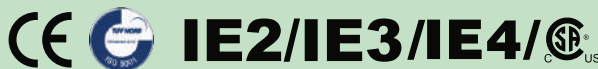
continuous batch production down to 0.03 mm. The MicroX ULTRA offers micro tool manufacturers all the benefits of ULTRA technology and ANCA's Machine Intelligence. As the only micro tool grinder with nanometer control, integrated tool measurement, and progressive automation, the six-axis grinder is the ideal solution for volume production of tools down to 0.03 mm.



**ANCA CNC Machines**  
www.anca.com  
Hall & Stall: 4/B-110

Source: ANCA CNC Machines

**Small CNC Horizontal Special Machine**  
**SMH series**  
A Modular CNC Machine Tool  
Dual Spindle Machine  
[www.shengyumc.com.tw](http://www.shengyumc.com.tw)  
SHENG YU PRECISION MACHINE CO., LTD.  
Tel: 886-4-24923577 Fax: 886-4-24923977  
b3736@ms16.hinet.net  
No.97, Renmei Rd., Dali Dist., Taichung City 412, Taiwan



*Delivering Solutions*



- ▶ **Machining**  
Flooding | Circulating | Grinding | Chip Conveyor | Filtration
- ▶ **High Pressure Cooling**  
Through Tool | Washing | Filtration
- ▶ **Oil Skimming**  
Belt | Disc
- ▶ **Refrigeration / Temperature Control**  
Printing | Packing | Welding | Mold Temperature
- ▶ **Media**  
Water | Coolant | Chemicals | Oil | Ink | Varnish | Washing Solution
- ▶ **Pump with BLDC Motor**

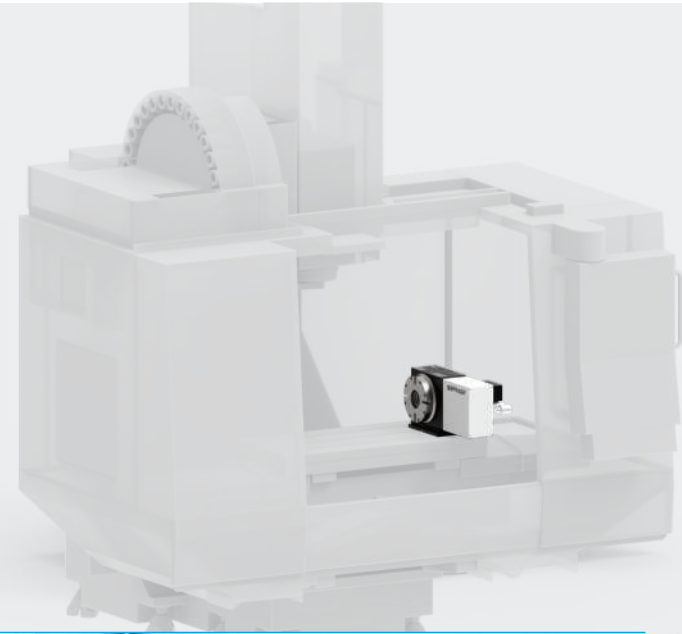
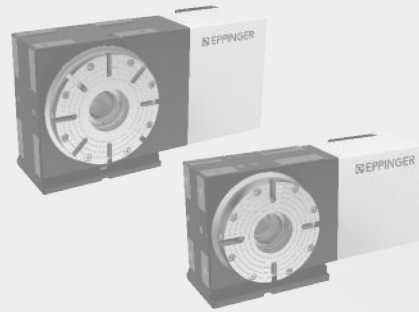


Visit us at Hall 3A, Stall B111

# High Speed High Precision CNC Rotary Tables

4<sup>th</sup> Axis redefined

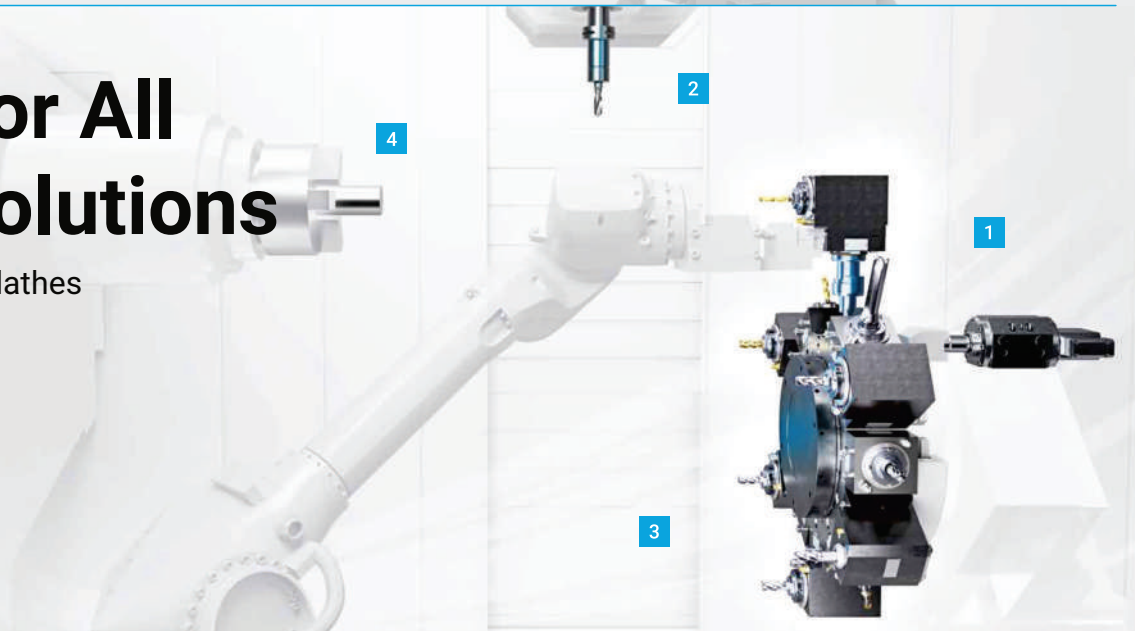
- Integrated angle sensor
- Positioning accuracy:  $\pm 5''$
- High clamping torque
- Universal mounting



# Your Partner For All Tool Holding Solutions

Up to fully automated tool change on lathes

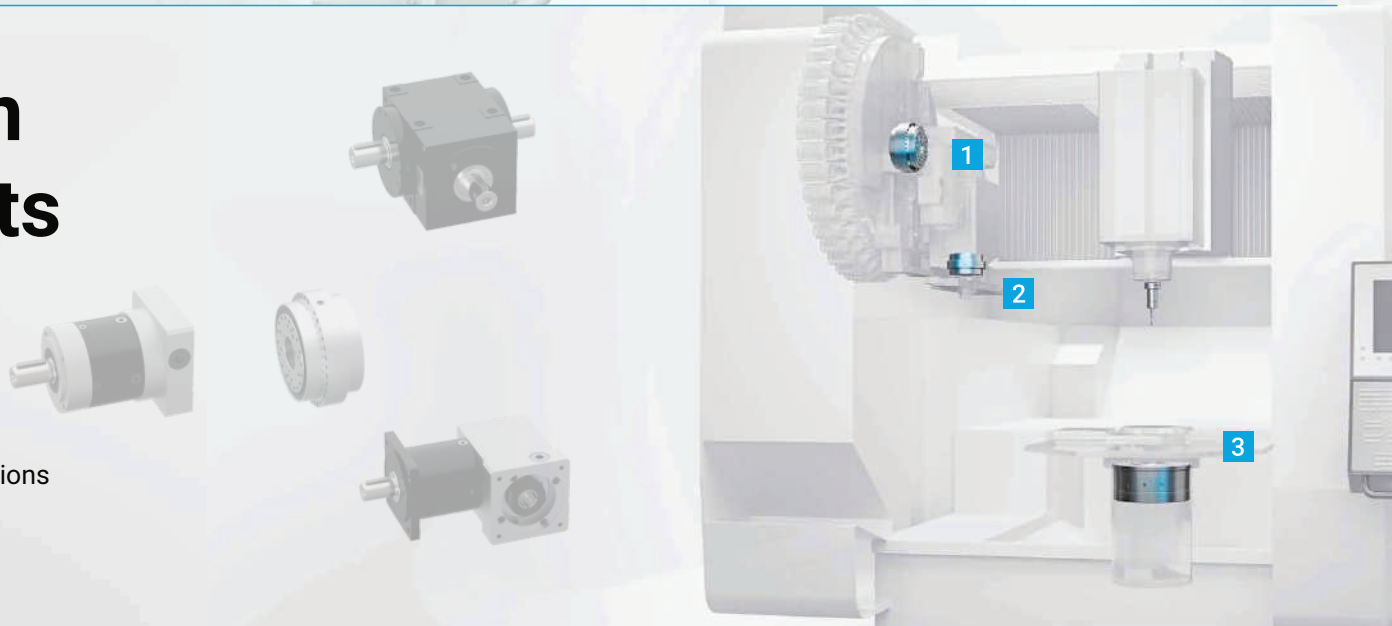
- 1 QUICKLOCKBMT<sup>®</sup> tooling system
- 2 Tool holder HSK/SK/PSC
- 3 Automation for tool holder & work piece
- 4 Your work piece



# Precision Gear Units

For all machine tools

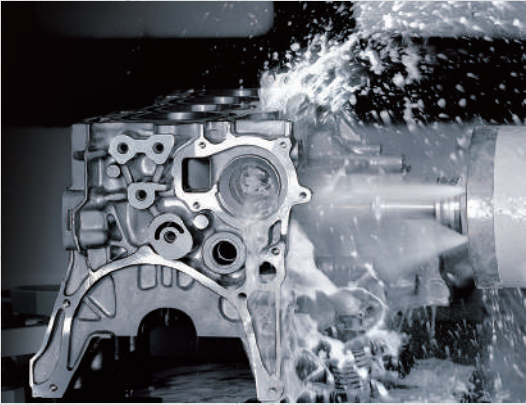
- 1 Tool disk / magazine
- 2 Tool changer
- 3 Material handling solutions



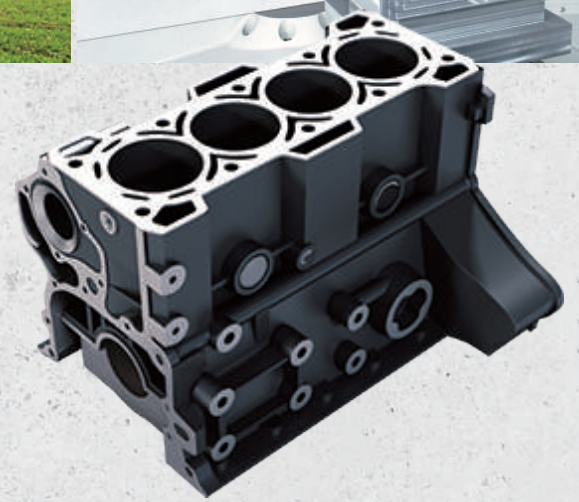




FOR AGRICULTURE INDUSTRY



## Horizontal Machining Center **HCN-6000**



A wide variety of spindles and high rigidity structure for efficient machining

- Spindle specifications to meet a wide variety of machining requirements
- The high rigidity bed is reinforced with strategically located ribs to ensure stability



**Yamazaki Mazak India Pvt. Ltd.**

**PUNE TECHNOLOGY CENTER**

115, Pune Nagar Road, Sanaswadi, Pune. 412208.

[www.mazak.com](http://www.mazak.com)





## CNC Turning Center

# MEGA TURN 600 L

Vertical CNC turning centers with high-torque and heavy duty machining capacity

- Outstanding cutting capacity for high productivity
- Symmetrical machines can be lined up to build an efficient line



**Mazak**



**CNC ROTARY TABLES**

# Enhancing Machining Productivity



Source: Magic Wand Media

IMTEX has been instrumental for UCAM in showcasing its innovations, connecting with industry leaders, and strengthening its global presence, says Varun Dev, Deputy CEO, UCAM Pvt Ltd. "The event has enabled UCAM to highlight advanced rotary tables and demonstrate their critical role in enhancing machining productivity."

**IMTEX 2025 Showcase**

At the event, UCAM is displaying its advanced CNC rotary tables, inclu-

ding the newly launched Roller Cam Rotary Table for high torque and precision, Direct Drive 4th and 5th Axis Rotary Tables, and cobot-integrated solutions. Additionally, IoT-enabled rotary tables demonstrate how smart manufacturing is enhancing productivity and monitoring. "These technologies align with our theme, 'Advancing Manufacturing: Precision Rotary Tables for Future,'" notes Dev.

The 4th and 5th Axis Rotary Tables, offering precision and flexibility for

multi-axis machining, IoT-enabled rotary tables and the Roller Cam Rotary Table, with enhanced durability and smart monitoring capabilities are garnering significant attention at the show, shares Dev. UCAM ensures seamless integration of its rotary tables with the latest CNC machines. The tables feature interfaces and customizable options, making them adaptable to vertical, horizontal, and multi-axis machining centers.

**On-site Activities at UCAM Booth**

The UCAM booth features enhanced 4th and 5th Axis solutions with live demonstrations, showcasing precision, adaptability, and smart manufacturing capabilities. Visitors can explore IoT-enabled rotary tables, cobot-integrated systems, and interactive Industry 4.0 displays. Expert-led demonstrations further engage attendees, providing insights into productivity enhancement and advanced machining. **SD**




Source: UCAM Pvt Ltd

» IMTEX has been instrumental for UCAM in showcasing its innovations, connecting with industry leaders, and strengthening its global presence. The event has enabled UCAM to highlight advanced rotary tables and demonstrate their critical role in enhancing machining productivity.«

**Varun Dev**  
Deputy CEO  
UCAM Pvt Ltd

**UCAM Pvt Ltd**  
www.ucamind.com  
Hall & Stall: 1/A-102

Supported by  Indian Machine Tool Manufacturers' Association

Organised by  **ACMA**  
Mobility Foundation

**Invitation**

**IMTEX 2025**

**AUTO COMPONENTS INDUSTRY TRANSFORMATION SUMMIT**

Gulmohar Hall, Convention Centre, Bangalore International Exhibition Centre (BIEC) in Bengaluru  
**26th January 2025**

*Greetings from ACMA Mobility Foundation*

*Dear Industry Patron,*

*We cordially invite you to join us at the "Auto Components Industry Transformation Summit", a premier event bringing together industry leaders, innovators, and experts from the machine tooling and automotive sectors.*

**Key Features >>>**

**Keynote Address:**  
Machining Excellence in the Auto Components Manufacturing industry, by 

**Mr Ganesh Mani**  
President & COO  
Ashok Leyland.

**Panel Discussion by:**  
Industry Experts "Auto Component Industry driving India's Growth"

**Fireside Chat Industry Experts:**  
Analysing India's Position in the global automotive component manufacturing landscape

Networking Opportunities: **Connect with peers, potential partners, and industry experts**


*We look forward to welcoming you at the summit!*

**Mr Sriram Viji**  
Chairman, ACMA southern region  
Managing Director, Brakes India

  
For registration

Please RSVP Ms Sumathi | 9962112050 | sundarathammal.d@acma.in

**ZAVENIR DAUBERT**



**-COOL®**

**WATER SOLUBLE CUTTING OILS**

- Consumption reduction due to Nano-Emulsion Technology
- Boron free environment friendly products
- Excellent corrosion resistance
- Low foaming, better fluid dynamics
- Long emulsion life - High Biostability



 Stall No. A112  BIEC Bengaluru

 Hall No. 3A  23<sup>rd</sup> - 29<sup>th</sup> Jan, 2025

FOLLOW US ON    
www.zavenir.com



Introducing the New High-Speed Spindle Machine:  
**Revolutionizing Precision and Productivity**

**OMEGA DUO**



We are excited to unveil our new high-speed spindle machine, designed to meet the growing demands of modern industries. With dual robust direct drive spindles capable of speeds ranging from 200 to 20,000 RPM, this machine offers optimum inertia and exceptional flexibility for a wide range of applications.

**Key Features:**

- Dual Spindle Operation
- Dual Spindle Operation
- Precision and Power

**Target Industries:**

The **OMEGA Series** is ideal for a variety of industries, including **orthopedic implants, automotive, aerospace, medical devices, and electric vehicle (EV) components**. From **knee implants and hip joints** to **EV motor covers and steering rack housings**, the OMEGA Series delivers superior results with precision and speed.

The new **OMEGA Series** is engineered to transform your manufacturing operations, offering **innovative features and unparalleled productivity** for the most demanding machining challenges.

Introducing the All-New OMEGA Series:  
**Revolutionizing Precision Machining**

**OMEGA PENTA**



We are thrilled to unveil the newly launched OMEGA Series, a cutting-edge line of CNC machining centers designed to redefine precision, speed, and productivity. Available in OMEGA 30S, OMEGA 30L, OMEGA 40S, and OMEGA 40L models, this series is engineered to meet the demands of industries requiring complex machining and high-performance capabilities.

**Key Features:**

- High-Speed Spindles
- Efficient Tool Change
- Heavy Load Capacity

**This unique combination of additive and subtractive manufacturing processes offers numerous advantages:**

- Seamless production of prototypes and end-use parts.
- Significant reductions in production time and material costs.
- Wide ranges of materials compatibility for various industrial applications.
- Compact design for optimized shop floor utilization.

Our hybrid machine paves the way for manufacturers to achieve faster production cycles, superior-quality outputs, and cost-effective operations. Whether it's for prototyping, tooling, or final part production, this versatile technology is set to transform the future of manufacturing.



**ADVANCED CNC MACHINES**

**Revolutionizing Machining with BFW's ORION TH5500-50**



Source: Bharat Fritz Werner Ltd

**Bharat Fritz Werner Ltd**  
Hall & Stall: 2/A-102  
[www.bfwindia.com](http://www.bfwindia.com)

**Tool Handling Excellence:**

60-tool capacity with a maximum tool diameter of 125 mm (250 mm with adjacent pockets empty), a weight capacity of 30 kg, and a rapid tool change time of just 4.7 seconds. Engineered to set a new benchmark in machining, this machine combines power, precision, and efficiency to meet the demanding needs of modern industries.

- Utilization of BFW iCTech composite technology for enhanced stability and damping.
- Bidirectional positioning accuracy and repeatability conforming to ISO 230:2 standards, at 0.008 mm and 0.005 mm, respectively, with a linear scale option.
- Servo-driven automatic tool change (ATC) door is designed to reduce chip-to-chip tool change times based on tool length.
- Machine configured for gantry loading, making it suitable for unmanned operations.
- Improved thermal stability is achieved through spindle cooling, ballscrew cooling, and NC rotary table housing cooling. **SD**

**B**FW has introduced its advanced CNC machine designed to redefine precision and productivity for industries like Auto, General Engineering, Defence, Hydraulic Manifolds, Pumps & Valves, and EV Gearbox Housing.

**Key Features and Specifications:**

**High-Performance Motorized Spindle:** HSK A100 taper, delivering 26/37 kW power with a maximum speed of 10,000 RPM and a torque of 252/382 Nm for unmatched cutting capabilities.

**Optimized Axes Movement:**

Generous X/Y/Z travel of 780/740/800 mm with rapid traverse rates of 60 m/min for faster cycle times.

**Enhanced Worktable:**

A robust table (630 x 500 mm) with a maximum job weight capacity of 700 kg and precise indexing at 360° x 1°.

**Forming the Future of Manufacturing**



International Forming Technology Exhibition

Concurrent Shows



Asia's Largest Exhibition on Metal Forming and Manufacturing Technologies

**21 - 25 January 2026 : BIEC, Bengaluru**

Organiser



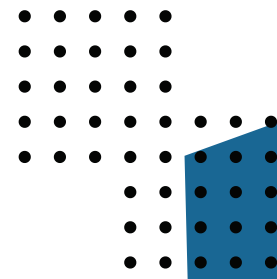
Venue





# PALMARY GROUP

*For Sale*



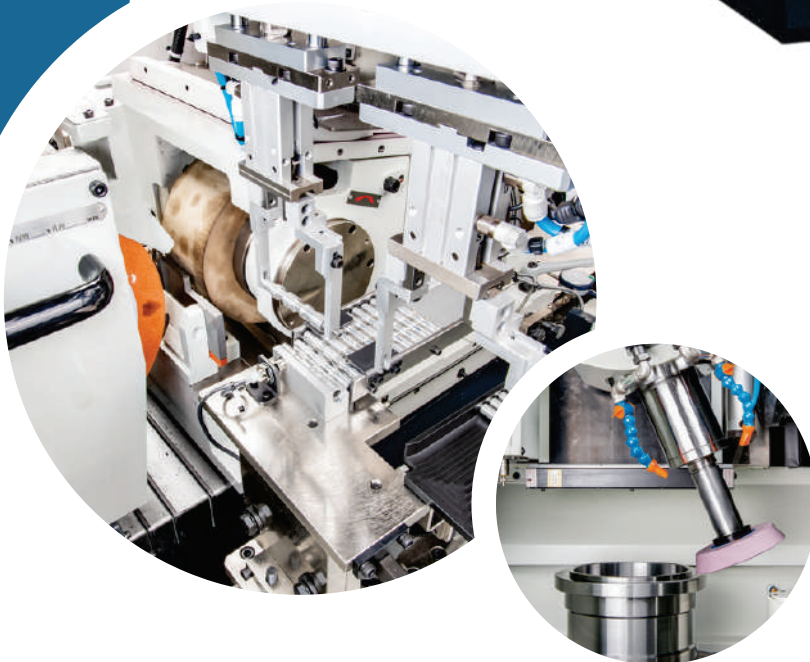
**CENTERLESS**



**CYLINDRICAL**



**VERTICAL**



## **SPECIAL FEATURES**

- Compound Grinding Solutions
- High Precision and Quality
- Seamless Automation
- Eco-friendly Design
- User-friendly with Intuitive Graphic Interface

Call for details

**+886-4-24929799**

For More Information  
[palmary@grinding.com.tw](http://palmary@grinding.com.tw)

Visit Us  
[www.palmary.com](http://www.palmary.com)





**TOOL DISCS & TOOL HOLDERS**

# Sphoorti's Tool Mastery Unveiled

IMTEX 2025 marks yet another milestone for Sphoorti Machine Tools Pvt Ltd, a leading manufacturer of precision tool discs and holders for CNC Turning and Turn Mill Centers. Known for its innovation and customer-centric approach, the company's participation in this prestigious event highlights its commitment to industry advancements.

## Meeting Diverse Needs

With a portfolio of nearly 1,000 varieties of tool holders, Sphoorti caters to a wide range of requirements for CNC machining, showcasing Tool Discs & Tool Holders (Static & Live / Driven) for CNC Lathes, Turning, or Turn Mill Centers. "We ensure to reach out to the leads right from a small static holder to a high-end driven tool holder," says RK Purohit, Managing Director, Sphoorti Machine Tools Pvt Ltd. The company achieves this through key account



Source: Magic Wand Media

management and export avenues along with diverse marketing channels, including direct and digital platforms, ensuring seamless support for machine tool builders and users worldwide.

## What Sets Sphoorti Apart

Sphoorti's tool holders stand out for their adaptability and quality. "Our motto is simple—if the machine runs, we win," shares Purohit. The

company works cohesively with machine tool builders to meet dynamic needs while maintaining flexibility for customizations. This customer-first mindset, coupled with an extensive product range, positions it as a reliable partner globally.

## Tapping into Emerging Industries

"Automotive holds the lion's share," says Purohit. "Innovative

**Sphoorti Machine Tools Pvt Ltd**  
www.sphoorti.com  
Hall & Stall: 4/A-134

demands are driven by sectors like Aerospace, Defence, Oil & Gas, Space, Energy, and the latest entrant, Semiconductors." The company is also venturing into engineering plastics for the sealing industry, demonstrating its adaptability to evolving market needs.

"We aim to maintain a streamlined product range to optimize our customers' inventory while staying consistent with our core offerings," he adds.

## Global Reach & Strategic Growth

Sphoorti's focus on BMT-type tool holders underscores its commitment to international markets, including the US, Europe, and Asia. "Our products are at par with European quality but are competitively priced, making us a preferred choice," Purohit highlights. **SD**

**MARKING & CLEANING TOOLS**

# AMF Markers for Permanent Marking of Workpieces

AMF-Markers are tools that can be used for the permanent marking of workpieces on CNC milling as well as turn-mill machines. With its special needle, marking can be achieved without the appearance of any cutting edges. The marking is accomplished through a combination of material compression and displacement. The tool can be used with or without machine spindle rotation. Moreover, marking is possible on smooth, uneven, and rough surfaces with a deviation between 3 and 7 mm. The tool is infinitely adjustable for use on

different materials, surface hardness, and depth of marking. If used on 45 HRC hardened steel, the effective tool life will be equivalent to a marking distance of 70 km. High-speed marking is also possible. The needles are highly wear-resistant and thus offer a long service life. Additionally, it is suitable for marking thin-walled workpieces and round surfaces (up to 15 degrees). Depending on the design, it is possible to mark surfaces with a hardness of up to 57 HRC. AMF Cleaners are tools for cleaning workpieces, tools, and the interior of CNC machines.

They are preferably clamped in Weldon chucks and mounted in the machine spindle of a CNC machine. AMF Cleaners use through-spindle coolant or compressed air. AMF Cleaners in the Stick design are available in lengths of 30, 100, and 180 mm and are ideally suitable for cleaning swarf from workpieces, vices, and fixtures prior to unloading the workpieces and before the next workpiece is loaded. The spindle can be static, or a slow rotation may be used to improve the cleaning operation. **SD**

**Marking And Cleaning Tools**

**ANDREAS MAIER Workholding Technology Pvt Ltd**  
www.amf.de  
Hall & Stall: 4A/C-120

Source: ANDREAS MAIER Workholding Technology Pvt Ltd

Indian Machine Tool Manufacturers' Association

Manufacturing Technology Training  
An IMTMA initiative

**Hone your Manufacturing Skills Anywhere, Anytime**

**E-learning courses**

Get started Now ! Log on to [www.imtmaelearn.in](http://www.imtmaelearn.in)  
Contact Mr. Ganapathi (+91 9535162810 ; ganapathi@imtma.in)



# UNSTOPPABLE GRIT

WANT TO COMPLETE COMPLEX AEROSPACE WORK WITH EASE? BLOHM AND MÄGERLE WILL BE THERE.

Aerospace work demands eye-popping precision, and if it's expected of your team, the job gets a whole lot easier if you have BLOHM and MÄGERLE machines on the shop floor.

- **BLOHM PROFIMAT MC7:** the latest PROFIMAT
- **MÄGERLE MFP 30:** 5-axis combination machining

Hall 4,  
Booth A 115





**MULTI-SPINDLE MACHINES AND JIGS**

# Next-Gen Machines for Precision Industries



Source: Magic Wand Media

Sheng Yu's solutions for a wide range of industrial applications.

## Smart Moves for Industry 4.0

"Through advanced CNC systems like Mitsubishi and Syntec, our machines support network connectivity for real-time process monitoring, optimized machining paths, and predictive maintenance," Sheng-Chih explains. These features align with the global Industry 4.0 transformation. Data logging and export functions further allow users to analyze production bottlenecks and improve workflows.

## Ideal for the Indian Market

The modular design high-efficiency SMH200 Dual-Spindle Machine is particularly suited for industries such as automotive components, machinery hardware, and home appliances. The Four-Axis Hydraulic Rotary Table Jig addresses the needs of precision-intensive sectors like aerospace and tooling by enhancing operational efficiency and reducing repositioning time. These machines are tailored for the Indi-



Source: Sheng Yu Precision Machine Co., Ltd

» IMTEX is one of the most important exhibitions in the machining industry across Asia and globally, offering us the opportunity to connect with international customers and partners.«

**Yang Sheng-Chih**  
General Manager  
Sheng Yu Precision Machine Co., Ltd

IMTEX is one of the most important exhibitions in the machining industry across Asia and globally, offering us the opportunity to connect with international customers and partners," says Yang Sheng-Chih, General Manager, Sheng Yu Precision Machine Co., Ltd. At IMTEX 2025, Sheng Yu is featuring its flagship products, focusing on innovation and global market growth.

## Showcasing Flagship Products

Sheng Yu is presenting the SMH200 Dual-Spindle Machine, which offers

high processing efficiency through independent multi-spindle operation and a three-axis traveling column. "With a spindle speed of up to 12,000 RPM, it's ideal for various workpieces and includes flexible tool magazine options," shares Sheng-Chih.

The Four-Axis Hydraulic Rotary Table Jig features an integrated L-block design, with modular components like a rotary table base plate and adjustable blocks for improved precision and efficiency. Also on display are the OK VISE and Hydraulic Brake, which complement

an market's need for cost-effectiveness and precision. Sheng Yu also ensures timely after-sales support in India with local service hubs, a professional technical team, and an efficient spare parts supply chain.



**Sheng Yu Precision Machine Co., Ltd**  
www.shengyumc.com.tw  
Hall & Stall: 1B/B-123

**AUTOMATION SYSTEMS**

## Siemens' SINUMERIK 828D

One can now future-proof their production with the new 5th Generation SINUMERIK 828D introduced by Siemens. The new SINUMERIK

828D is designed to enhance productivity, security, and customization in modern manufacturing. With cutting-edge features like Digital Twin readiness, effortless

HMI customization, and 40 percent faster program buffering, it streamlines operations and improves efficiency. The high-resolution display ensures clear operator visibility, while robust cybersecurity, including IEC 62443 compliance, safeguards one's systems from threats.

**Siemens Ltd**  
www.siemens.co.in/imtex  
Hall & Stall: 5/B-112



**ENHANCING THE PERFORMANCE OF MACHINES**

TESTING

TROUBLE SHOOTING

PROBLEM SOLVING

**AMTTF**  
ADVANCED MACHINE TOOL TESTING FACILITY

An ISO 9001:2015 Certified Testing Facility

JOINT PROJECT BY

**ADVANCED MACHINE TOOL TESTING FACILITY**  
CMTI Campus, Tumkur Road, Bangalore - 560022,  
Telephone : 080 22188322 / 08867475758  
Email : director@amttf.in

[www.amttf.in](http://www.amttf.in)



# **AceMicromatic**<sup>®</sup> Group

## India's Largest Machine Tool Group with Global Foot Print

Visit us @



Hall No: 05



Stall No: B109

**TRANSFORMING  
ACCELERATING**

**MANUFACTURING  
INNOVATION**

**40+ Exhibits  
across modernising  
domains**

**25,000+ sqft  
Display area**

### All You Need In Machining





# TALK OF THE TOWN

VISIT US AT HALL 5



TOWN OF TECHNOLOGY

